

# **OVERVIEW OF EAST ASIA AND THE PACIFIC PROGRAMME**

**by Head, TCAPS**

**Requests received: No of Proposals:111**  
**Hard - core Programme approved 2001-2002:**  
**USD 24,961,221**

Catagory (Hard core)	No of Project	Allocation	
		2001	2002
New	:95	7,444,156	7,908,325
Extension	:28	2,656,845	2,335,610
Continuation	:28	2,457,035	1,859,610

Approval Budget (TCF):        USD 12,857,676  
Carryover 2000                :        USD 5,849,393  
No of Projects                 :        233  
Adjusted Budget (All funds):   USD 18,707,069

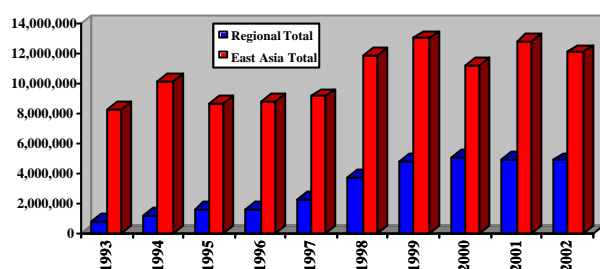
## The Model Project Concept

- ✍ respond to a real need;
- ✍ reflect an indispensable role for the nuclear technology involved;
- ✍ produce significant economic or social impact; and
- ✍ have demonstrated potential for sustainability through strong Government commitment.

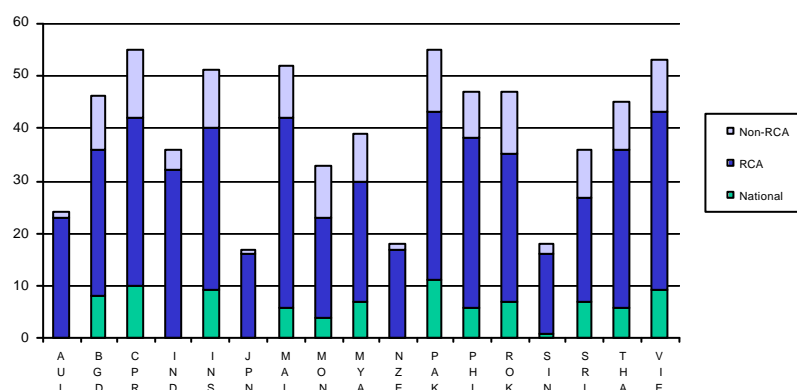
Such projects are referred to in the Agency's terminology as "Model Project".

### Hard-core Programme of East Asia and the Pacific Region 1993-2002

Programme	1993	1994	1995	1996	1997	1998	1999	2000	2001	2002
Regional			432,200	321,700	497,940	1,211,975	2,103,205	2,153,710	2,500,940	2,560,651
RCA	851,250	1,222,600	1,200,600	1,331,900	1,817,760	2,528,367	2,726,880	2,998,875	2,450,470	2,351,661
Regional Total	851,250	1,222,600	1,632,800	1,653,600	2,315,700	3,740,342	4,830,085	5,152,585	4,951,410	4,912,311
National Total	7,421,100	8,926,950	7,118,340	7,183,608	6,871,853	8,139,209	8,197,480	6,153,720	7,906,266	7,191,231
East Asia Total	8,272,350	10,149,550	8,751,140	8,837,208	9,187,553	11,879,551	13,027,565	11,306,305	12,857,676	12,103,541
% Share of Regional of Total	10	12	19	19	25	31	37	46	39	41



### East Asia and the Pacific Region Member States Participating in National and Regional Projects



## Central Criterion

*A project meets the central criterion if:*

- ✍ it is in an area where there is a national programme enjoying strong government commitment with evidence of significant financial support;
- ✍ it is clearly related to the core competencies of the Agency and has a good chance of achieving its expected result.

## PROJECTS WITH FUTURE YEAR BUDGET COMMITMENT

- CO : Projects with budget already indicated in the 2001-2002 TCP**
- CI : Projects designed in 2001-2002 TCP for 2003-2004 and beyond, but no budget figures for 2003-2004 are given**
- CII : Projects with no component beyond 2002 TCP but strongly expected to be extended or continue in 2003-2004**

**Distribution of estimated 2003-2004 TCF commitments  
for the East Asia and the Pacific Region (TCAPS)**

