

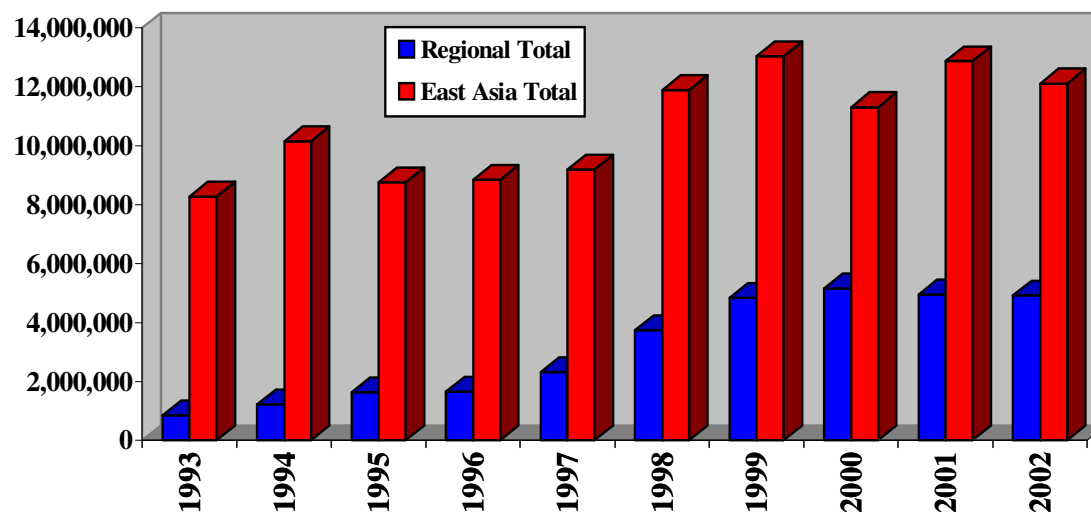
East Asia and the Pacific Section

Technical Cooperation Programme for 2002 and 2003-2004

Seoul, 25-29 March 2002

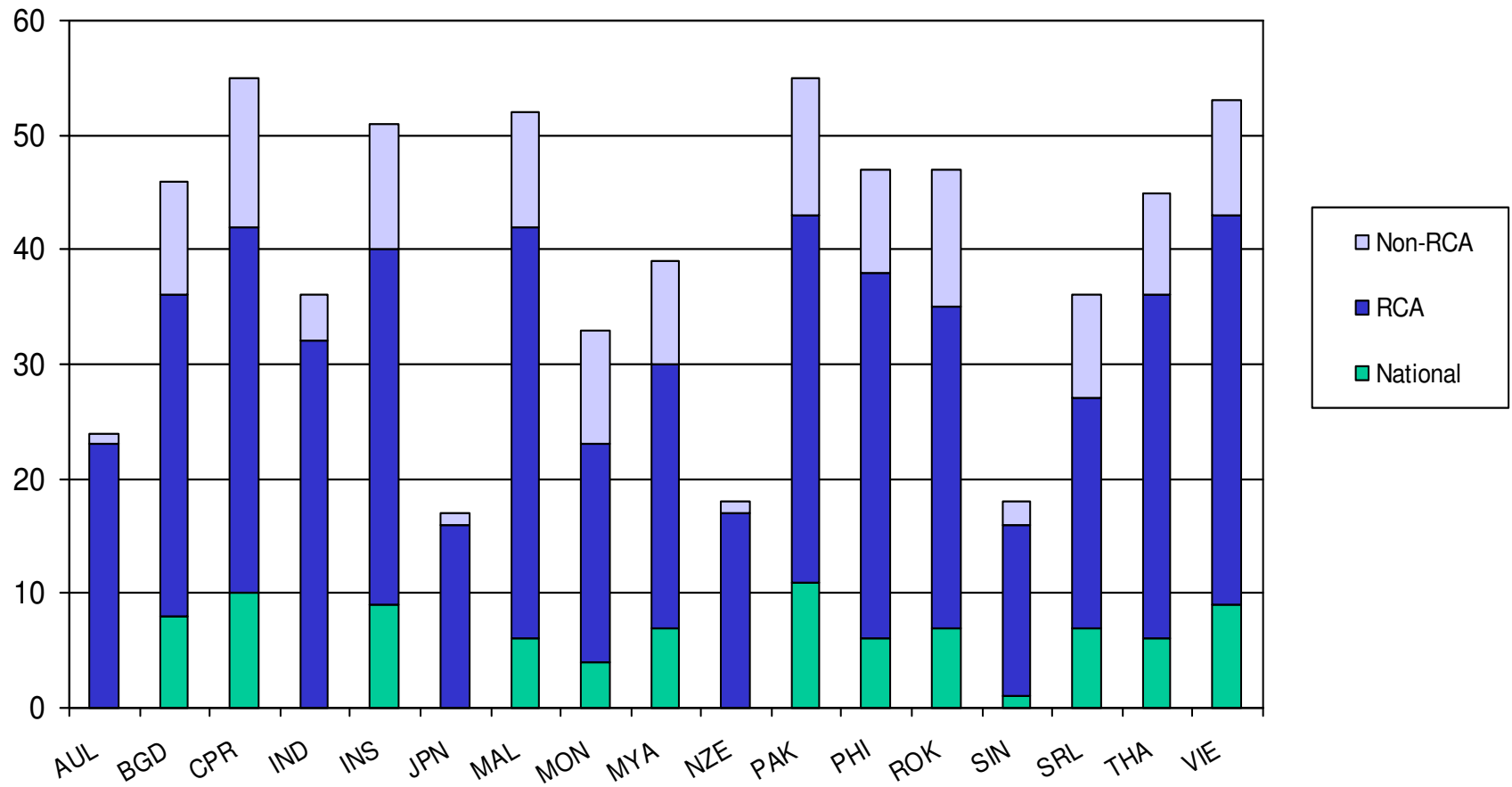
Hard-core Programme of the East Asia and the Pacific Region 1993-2002

Programme	1993	1994	1995	1996	1997	1998	1999	2000	2001	2002
Regional			432,200	321,700	497,940	1,211,975	2,103,205	2,153,710	2,500,940	2,560,650
RCA	851,250	1,222,600	1,200,600	1,331,900	1,817,760	2,528,367	2,726,880	2,998,875	2,450,470	2,351,660
Regional Total	851,250	1,222,600	1,632,800	1,653,600	2,315,700	3,740,342	4,830,085	5,152,585	4,951,410	4,912,310
National Total	7,421,100	8,926,950	7,118,340	7,183,608	6,871,853	8,139,209	8,197,480	6,153,720	7,906,266	7,191,235
East Asia Total	8,272,350	10,149,550	8,751,140	8,837,208	9,187,553	11,879,551	13,027,565	11,306,305	12,857,676	12,103,545
% Share of Regional of Total	10	12	19	19	25	31	37	46	39	41

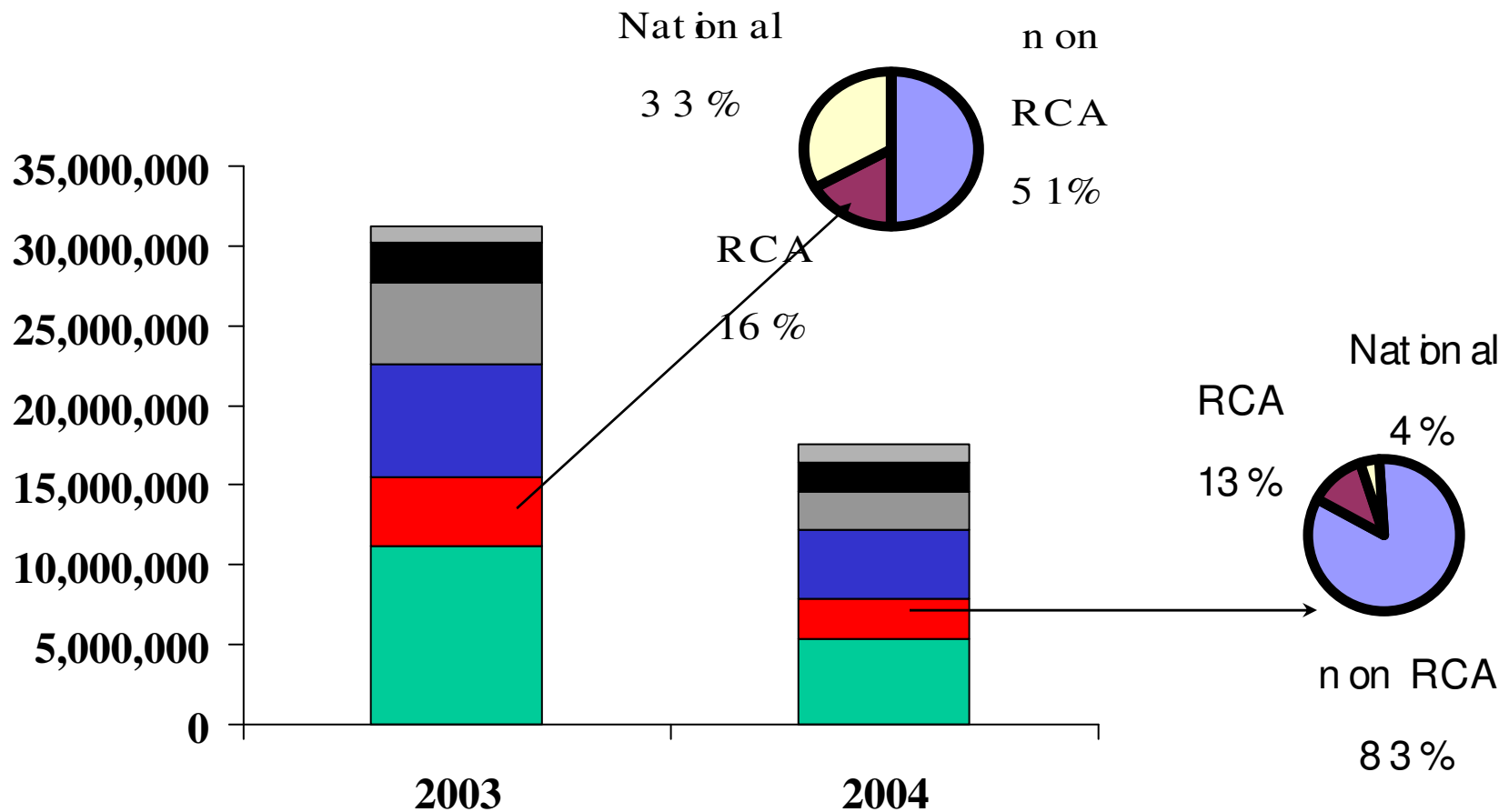


East Asia and the Pacific Region

Member States Participating in National and Regional Projects



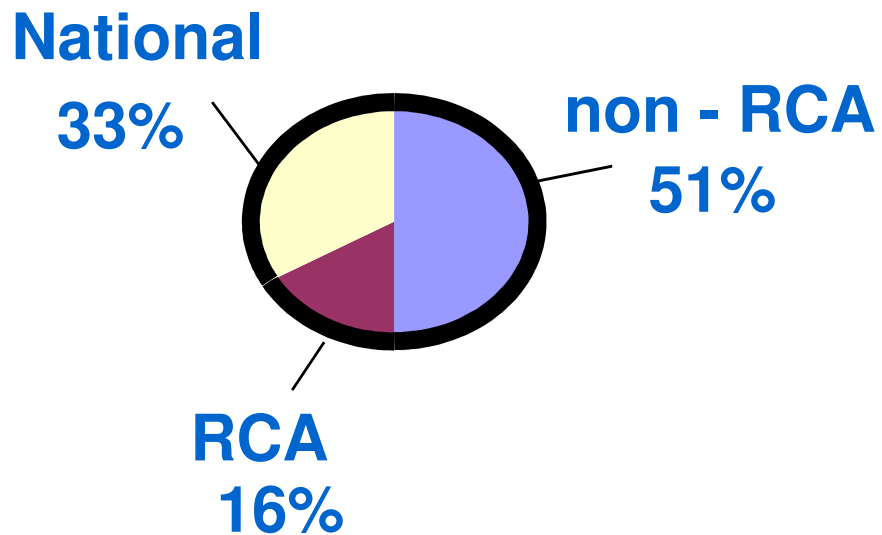
Commitments for 2003 and 2004



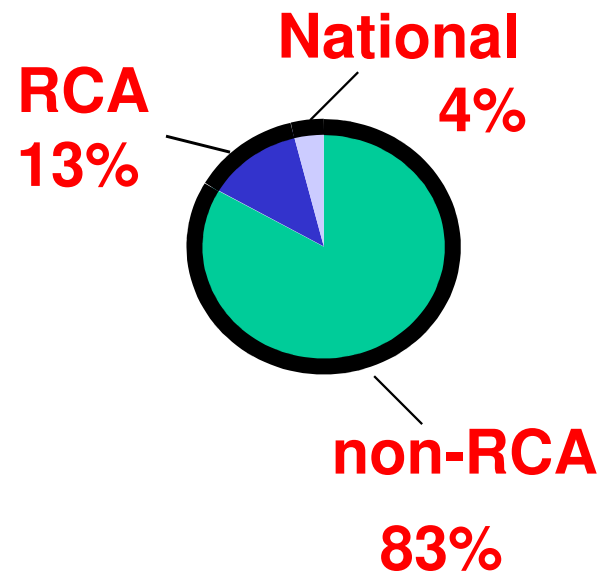
■ Africa	■ East Asia & Pacific	■ Europe
■ Latin America	■ West Asia	■ Interregional

Commitments for 2003 and 2004

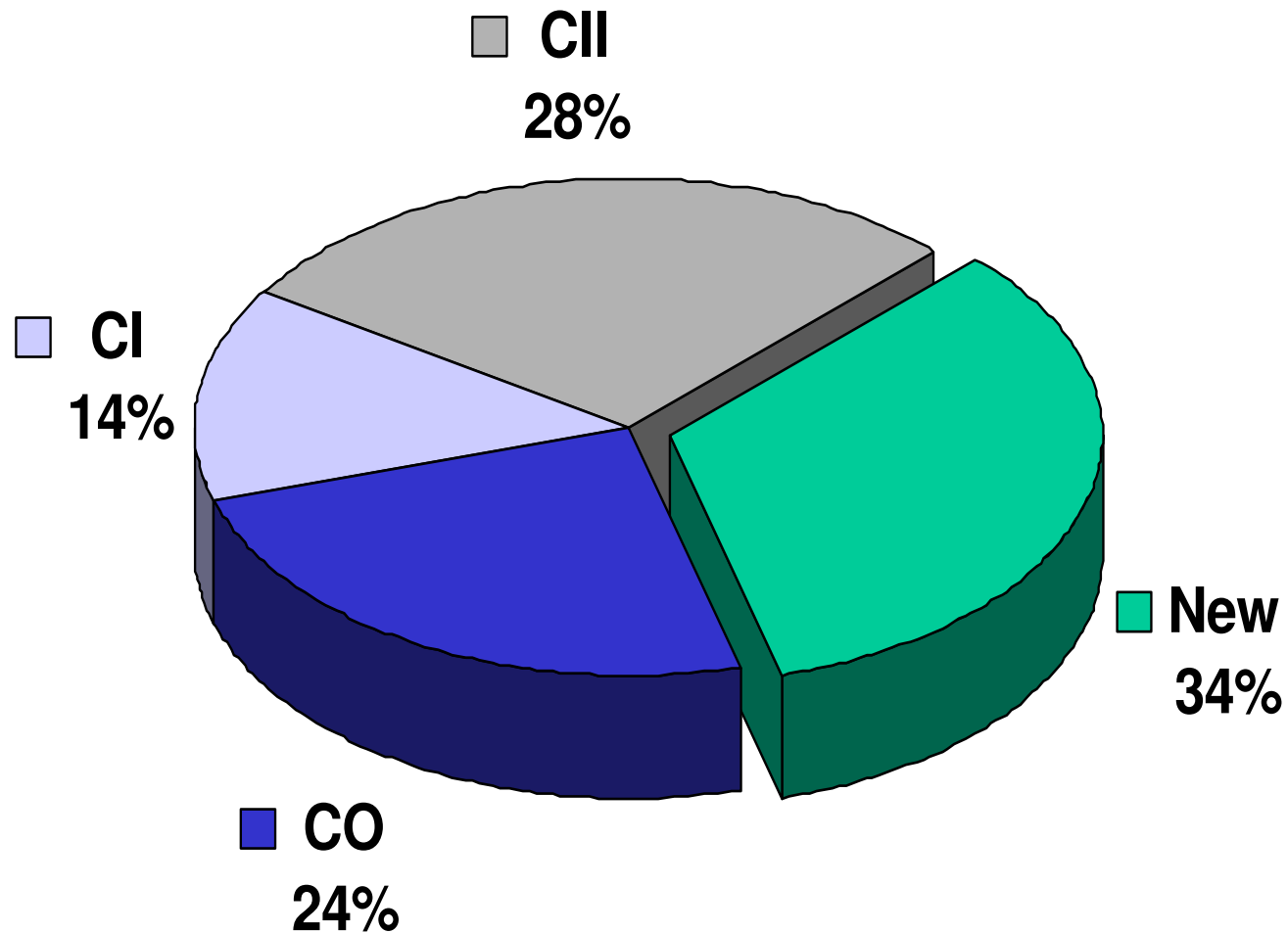
2003



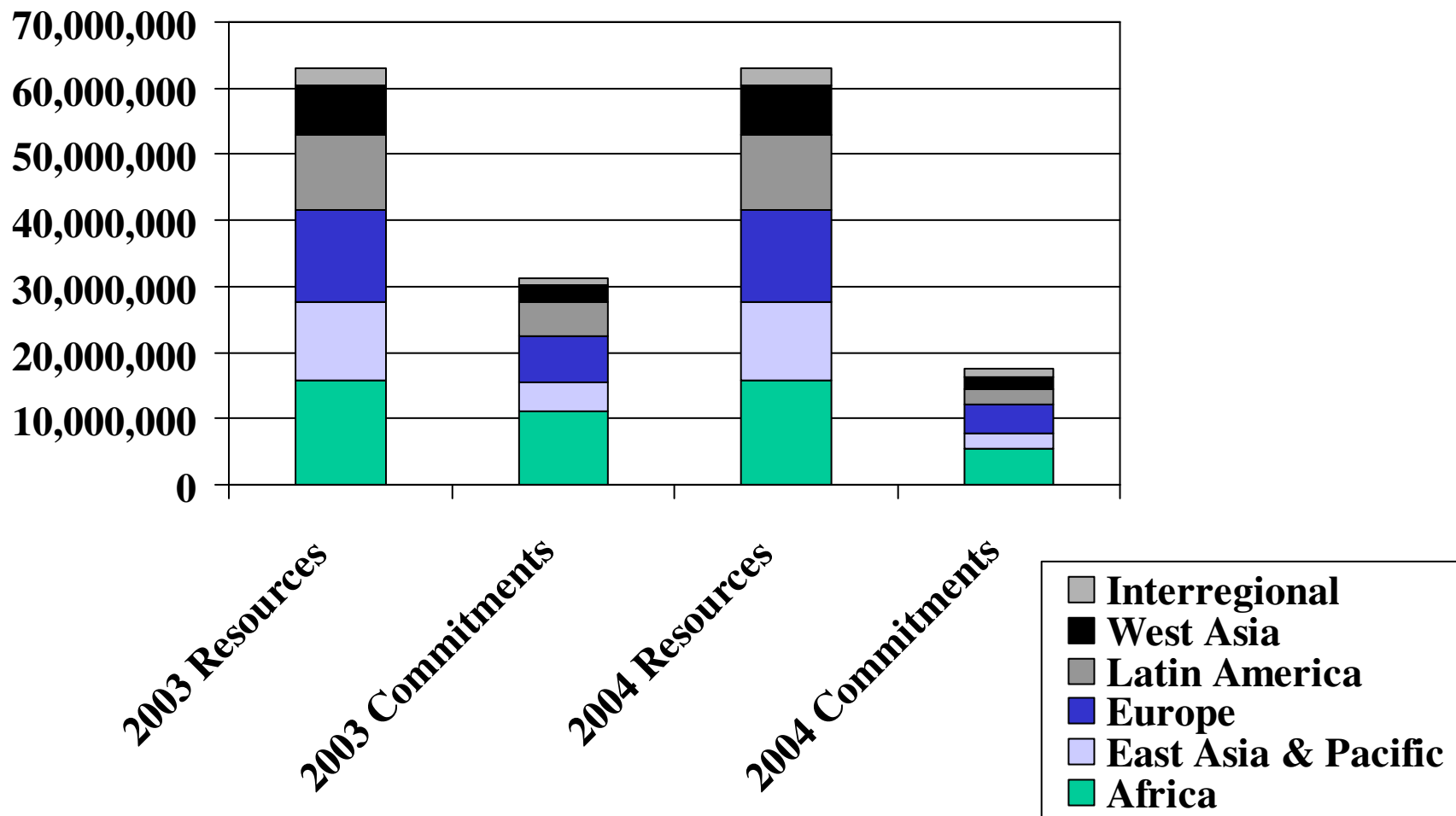
2004



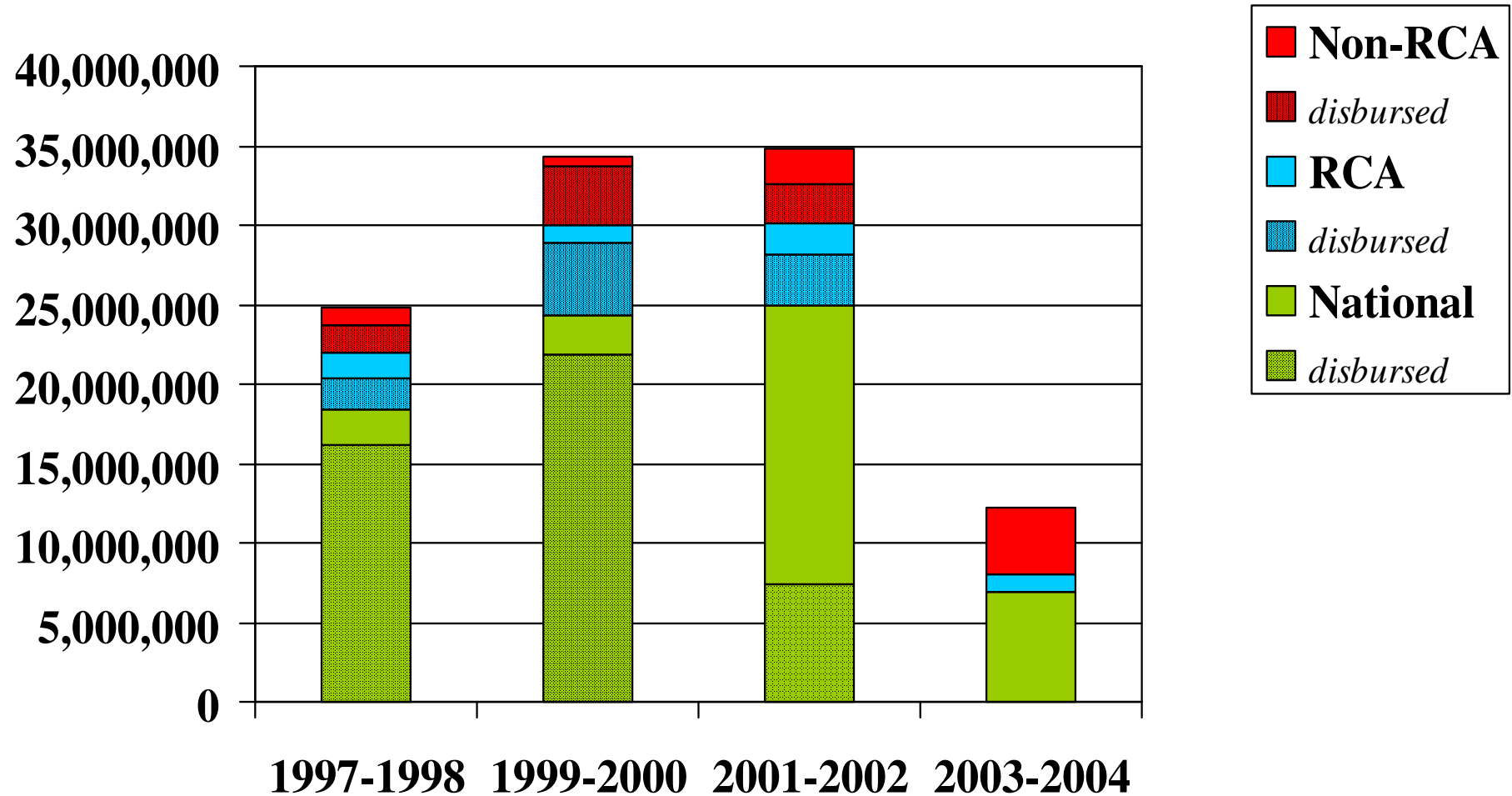
Distribution of Estimated 2003-2004 TCF Commitments for the East Asia and the Pacific Region



TC Programme Approvals for 2003 and 2004



TCAPS Programme Approvals by Cycle



2003-2004 TCP Parameters

- **Allocation:** **12 Million USD per year**
- **Distribution:**
 - National** **60 %**
 - Regional** **40 %** out of which
 - RCA* *50-60 %*
 - Non-RCA* *40-50 %*
- **Effectiveness of regional or national projects towards achievement of results and sustainability.**
- **The number of projects (be it new, extension, continuation) funded under TCP does not exceed 5 per country on average.**

Project Requests Received

National

<i>New</i>	<i>86</i>
<i>Continuation</i>	<i>37</i>
<i>Extension</i>	<i>20</i>

Regional

<i>RCA</i>		<i>Non-RCA</i>	
<i>New</i>	<i>6</i>	<i>New</i>	<i>13</i>
<i>Continuation</i>	<i>9</i>	<i>Continuation</i>	<i>#</i>
<i>Extension</i>	<i>10</i>	<i>Extension</i>	<i>#</i>

Average: *#*

Preliminary Review of Project Requests

National Projects

Meeting the Central Criteria	80%
-------------------------------------	------------

Compliment to Donor support	20%
------------------------------------	------------

Core competency of the Agency	33%
--------------------------------------	------------

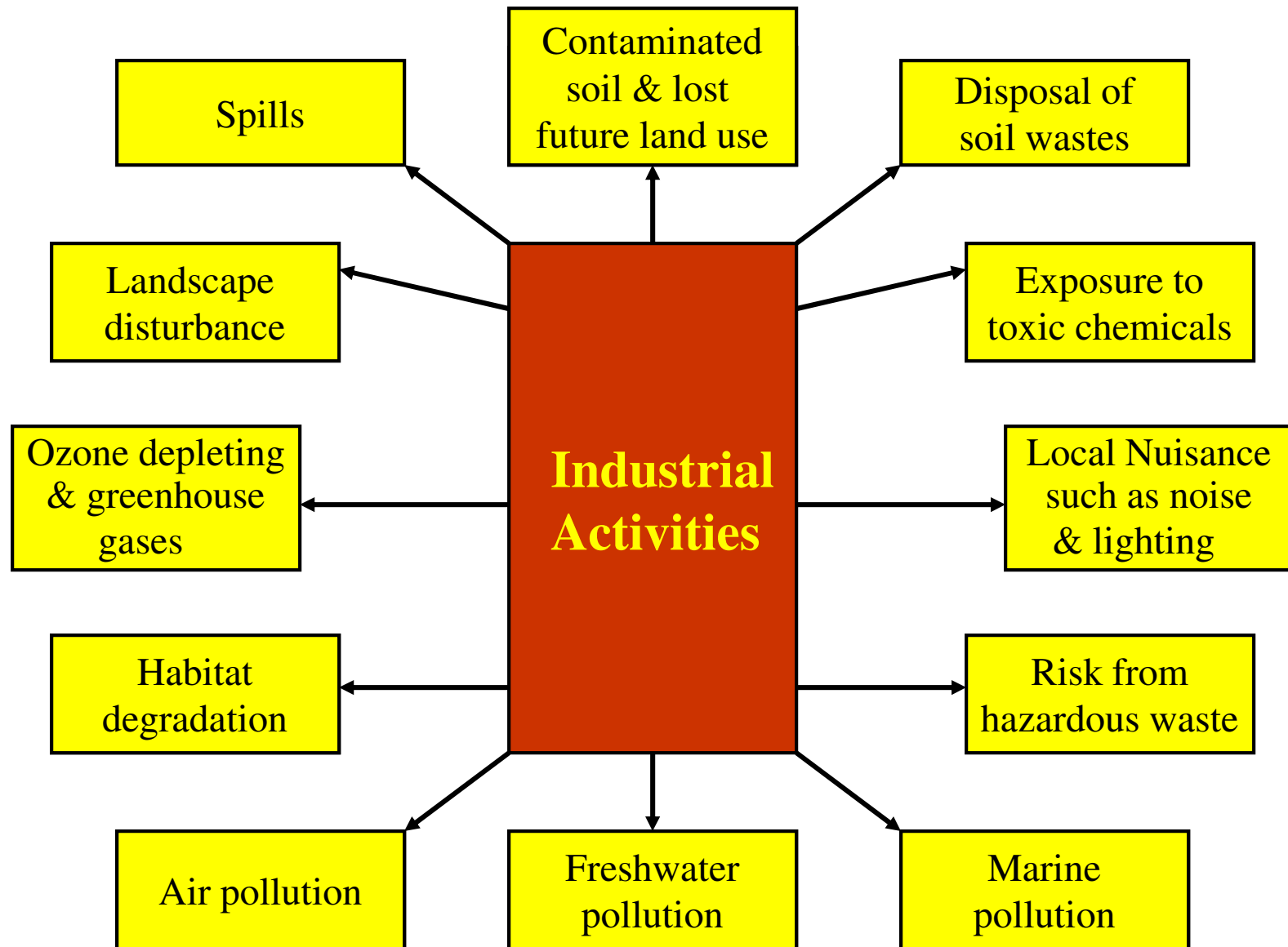
Process of Programming

	National	Regional	
		RCA	Non-RCA
Member States	National Liaison Officer	National RCA Representatives Nat. RCA Project Coordinators Lead Country Coordinators	Nat. TC Liaison Officer
	Project Counterparts	National RCA Reps. Meeting Project Committee	Project Counterpart
Agency	Country Officer Technical Officers	RCA Coordinator Technical Officers	Project Manager Technical Officers

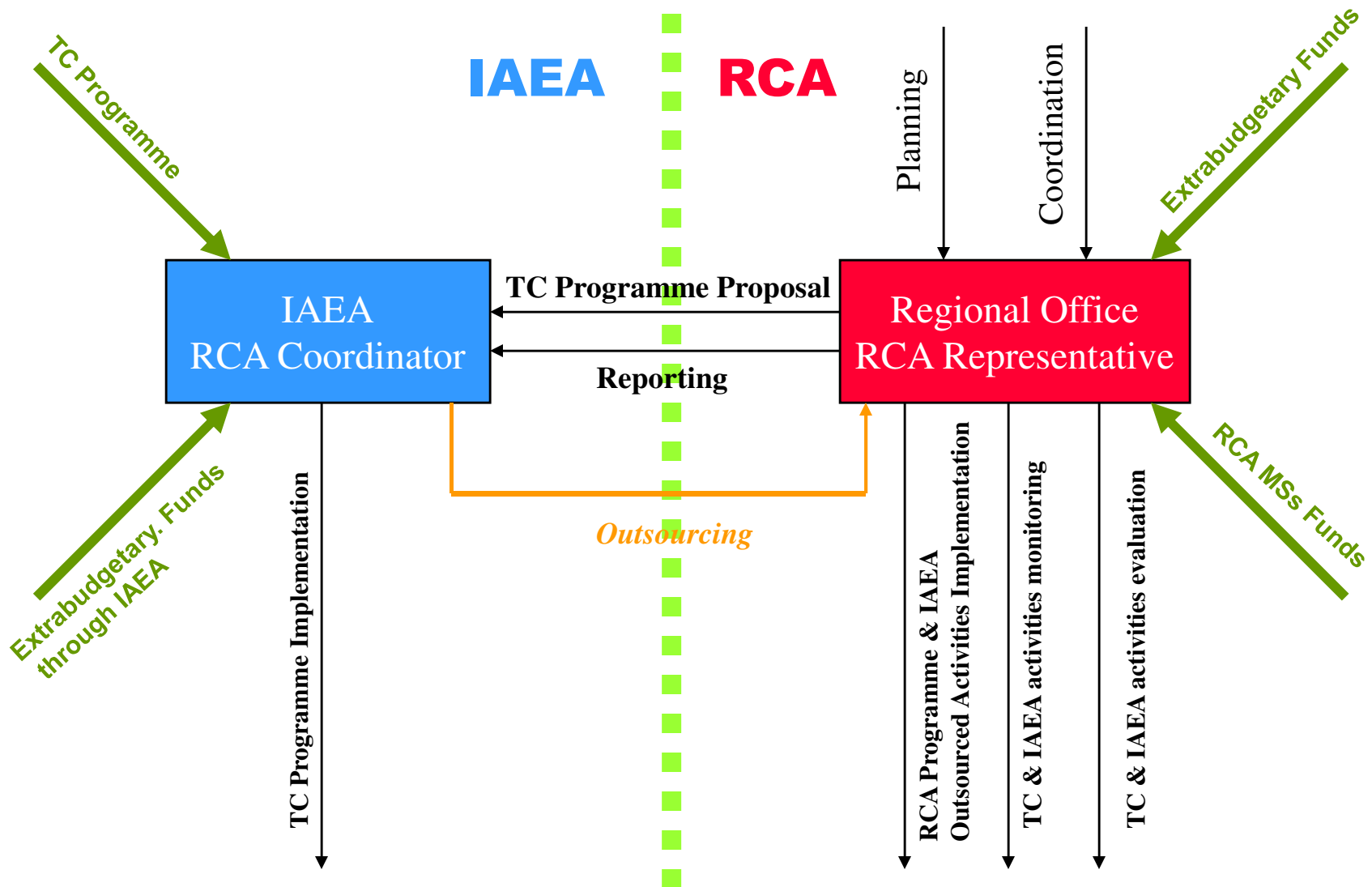
Management of Programming and Delivery

Programming	National	RCA
Upstream:	Nat. TC Liaison Officer Project Counterpart	National RCA Reps. Meeting RCA Project Coordinator Lead Country Coordinator Project Committee
Delivery:	Project Counterpart National	Lead Country Project Coordinator

Management of Section:
The environmental impact of industrial activities



Role of the RCA Regional Office



The Schedule

Appraisal:

- National Projects:** by CO: 1/1 – 15/3
by TO: until 17/5
- Regional Projects:** Finalization by 17/5

Completion of Appraisals: 7/6

Write-up:

- *Continuations and Extensions:* by 24/5
- *Regional & Interregional:* by 14/6
- *National :* by 26/7

The Schedule

Programme Review:

- *Preliminary budget:* by 21/6
- *TCP* by 26/7
- *Due Account:* by 30/8

Programme Finalization:

- *Locking in Pipeline:* by 6/9
- *General Conference:* 16-20/9
- *Finalization:* 27/9